

Sutura serózních orgánů

suture of serous organs

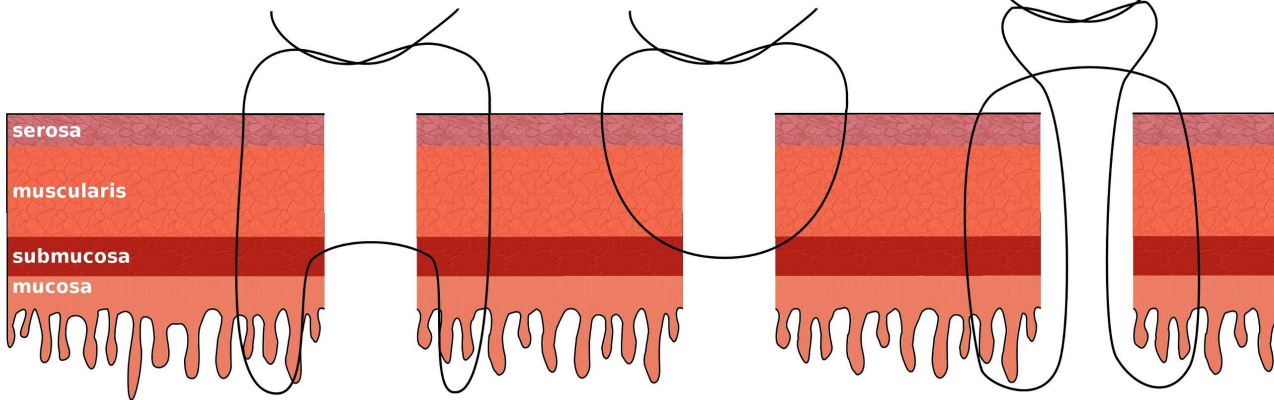
aproximační

approximating

Gambee

Czerny

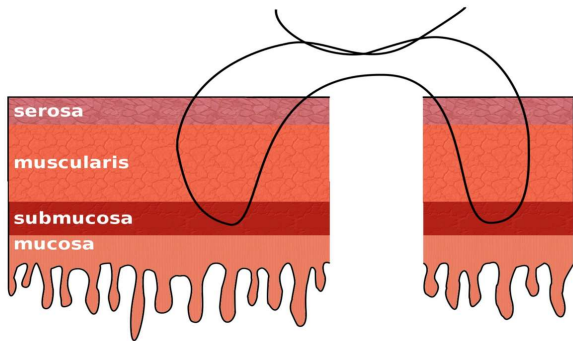
Von Mikulicz



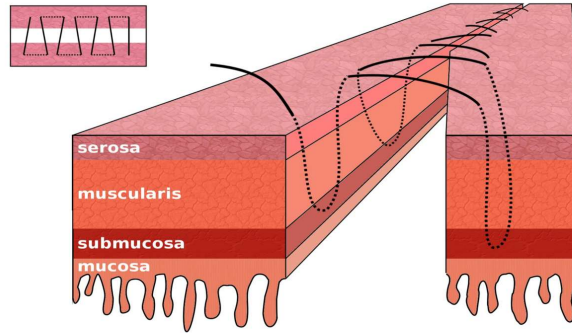
invertující

inverting

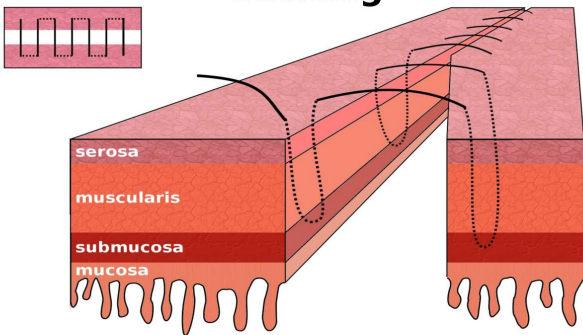
Lembert



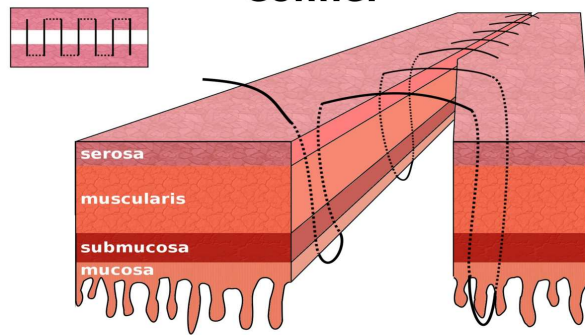
Amann



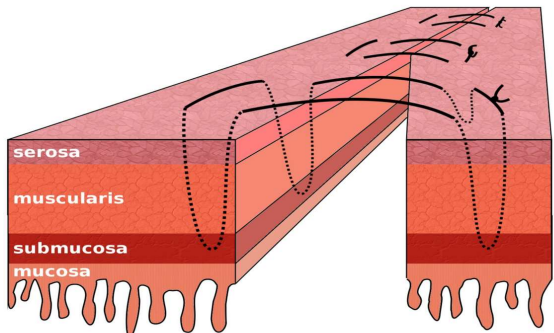
Cushing



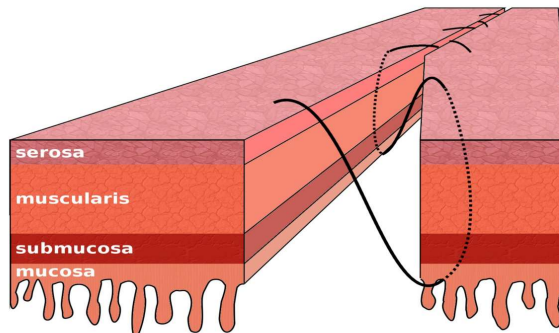
Connel



Halsted



Schmieden



vlákno: vstřebatelné
monofilamentní
jehla: atraumatická
tloušťka: 2/0 - 5/0

thread: absorbable
monofilament
needle: atraumatic
size: 2/0 - 5/0